

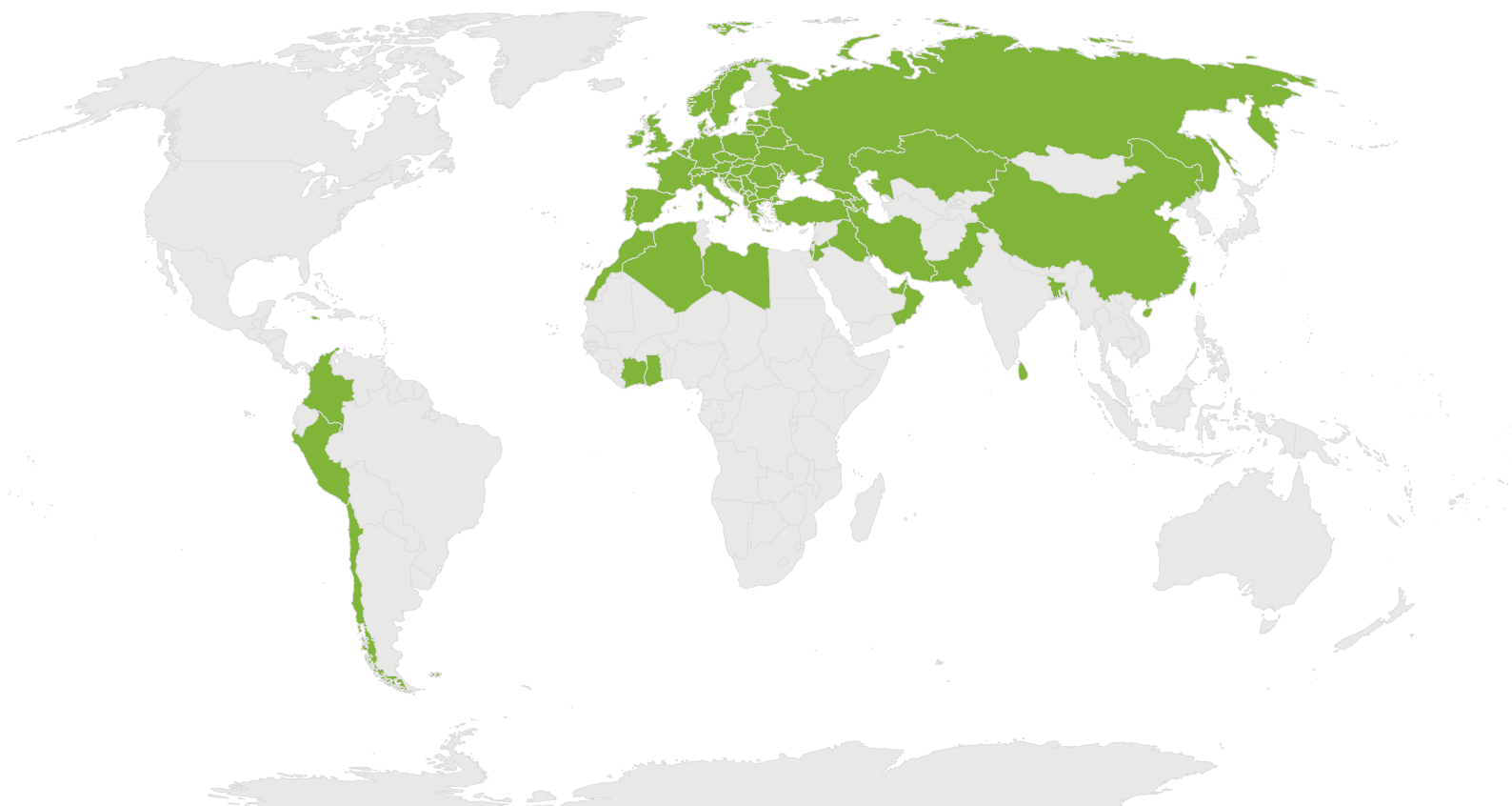


HOME



ELECTRIC WATER HEATERS





MORE THAN
55 COUNTRIES

4 CONTINENTS

MORE THAN
840 EMPLOYEES

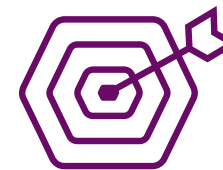
4 FACTORIES

ABOUT TESY

TESY is one of the leading European producers of **electric storage water heaters, indirectly heated water tanks, heat pump water heaters** and **electric heating appliances**.

In the last decade TESY showed a rapid development and introduced to the world a wide range of cutting-edge products and patented solutions that meet the current requirements for energy efficiency and environmental protection.

The company continues its development by investing in the latest technologies, production capacity expansion and launching of new products.



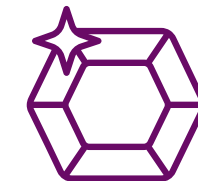
MISSION

We set our hearts and minds on bringing warmth into your life.



VISION

Raising the bar in our industry, to be globally recognised as a leader of innovation and design in hot water and heating solutions. More comfort with a single touch.



VALUES

➤ PASSION

We are a passionate team of enthusiastic professionals with ambitious goals. Leading by example, we create a culture that inspires people to go the extra mile. We put our hearts and minds in everything we do to embrace dynamic change.

➤ INNOVATION

TESY people are open-minded, eager to learn and inspired to create. Challenging the status quo, we employ the latest technologies in supreme functionality and impressive design.

➤ TRUST

The shared vision for openness and integrity is the core virtue of TESY's long-term partnerships. Supportive, loyal and trustful, we offer reliable products and service quality with respect for the individual.



ELECTRIC WATER HEATERS

page 4	About TESI
page 5	Mission, Vision, Values
page 6	Catalogue content
page 7	How to read TESI symbols
page 8	Corporate social responsibility
page 10	Why to choose TESI
page 12	Innovations
page 14	Solutions
page 16	BELLISLIMO FAMILY
page 18	BelliSlimo Cloud
page 20	BelliSlimo Dry
page 22	BelliSlimo
page 24	MODECO FAMILY
page 26	ModEco Cloud
page 28	ModEco Ceramic
page 30	BILIGHT FAMILY
page 32	BiLight
page 34	BiLight Horizontal
page 36	ANTICALC FAMILY
page 38	Anticalc
page 40	Anticalc Reversible
page 42	COMPACT FAMILY
page 44	Compact 7
page 46	Compact 10/15
page 48	Energy labels

TESY SYMBOLS

	TESY CLOUD		ECO SMART MODE		TOUCH CONTROL PANEL
	STAINLESS STEEL PIPE		SLIM DESIGN		PLASMA WELDING
	HYGIENIC CERTIFICATE		COPPER HEATING ELEMENT		DRY HEATING ELEMENT
	PUSH-PUSH ROTATING KNOB		COMPACT SIZE		ABOVE SINK INSTALLATION
	INSUTECH TECHNOLOGY		TURBULATOR		PISTON EFFECT
	ANODE PROTECTOR		NO THERMAL BRIDGE		CAPILLARY THERMOSTAT
	LIMESCALE PROTECTION		EASY INSTALLATION		BILIGHT FUNCTION
	LCD ELECTRONIC DISPLAY		CERAMIC HEATING ELEMENT		ADJUSTABLE THERMOREGULATOR
	CRYSTALTECH		UNDER SINK INSTALLATION		

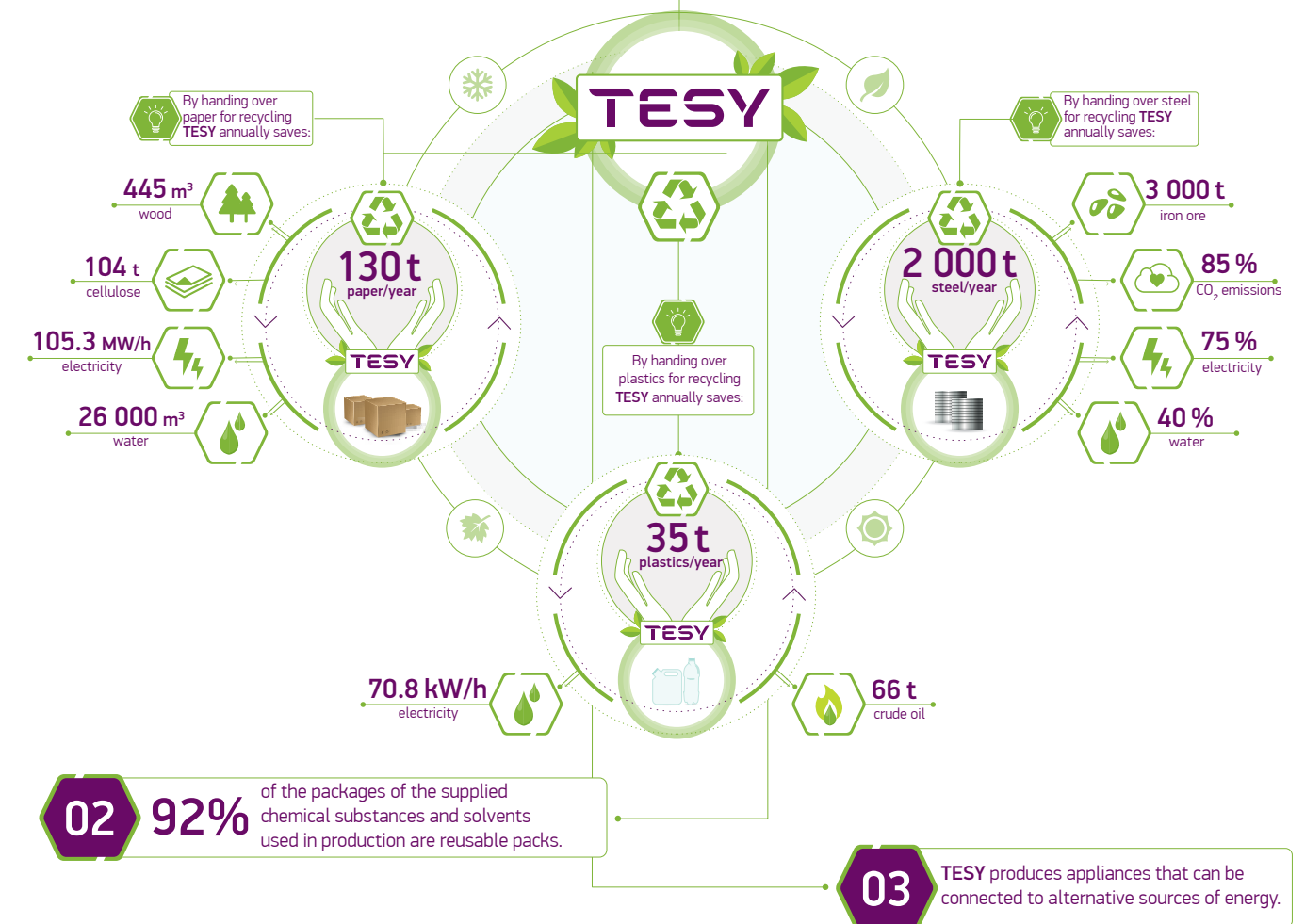
TESY is committed to integrate Corporate Social Responsibility into all business policies and practices and thus minimise the environmental impact during production.

We strive to constantly improve established processes and we are strictly following all regulations for environmental protection.

As our focus is on efficiency, our appliances can also use alternative sources of energy.



01 94 % of TESY's waste is handed over for recycling and / or recovery.





WHY TESI?

because you get....

- **The comfort** of real time monitoring and control of your water heater any time any place via highly secured internet connection.
- **The luxury** to use a smart appliance which takes care of your everyday life and ensures hot water exactly when you need it.
- **The safety** to rely on a robust and durable water tank construction.
- **The convenience** of easy cleaning and service of your appliance for life-long excellent operation.
- **The pleasure** to enjoy all the hot water you and your loved ones need.

TESY CLOUD & TESI CLOUD APP



TESY Cloud together with the TESI Cloud App provides real-time monitoring and control of the water heater via Internet at any time and anywhere. The installation and connection of the appliances is made easy and intuitive. Backup and recovery of the preferred operating modes is ensured in cases of loss of power or Internet connection failure. The connection between the water heater and the Cloud is encrypted and highly secure, guaranteeing protection against any unwanted access. The option to link two or more electric water heaters enables fast and convenient control of the group. Using the precise programming and the remote control results in a reduction of the monthly electricity bills.

TESY Cloud App provides easy access to various functionalities:

- **Weekly programmer** - used for setting the weekly operation of the electric water heater. A schedule can be set for each day of the week and each hour of the day, according to the customer's preferences.
- **Vacation mode** - suitable for situations when the customer will not be at home for a period of time. By setting the duration of the absence, the expected return date and the desired temperature of the water, the electric water heater will know when the customer will be back and will deliver enough hot water. During the vacation period the appliance will operate in Anti-freeze mode.
- **Energy calculator** – allows easy monitoring of the consumed energy since the beginning of the electric water heater's operation or the last reset of the calculator.
- **Boost function** – one-time heating up to the maximum temperature.

ECO SMART MODE

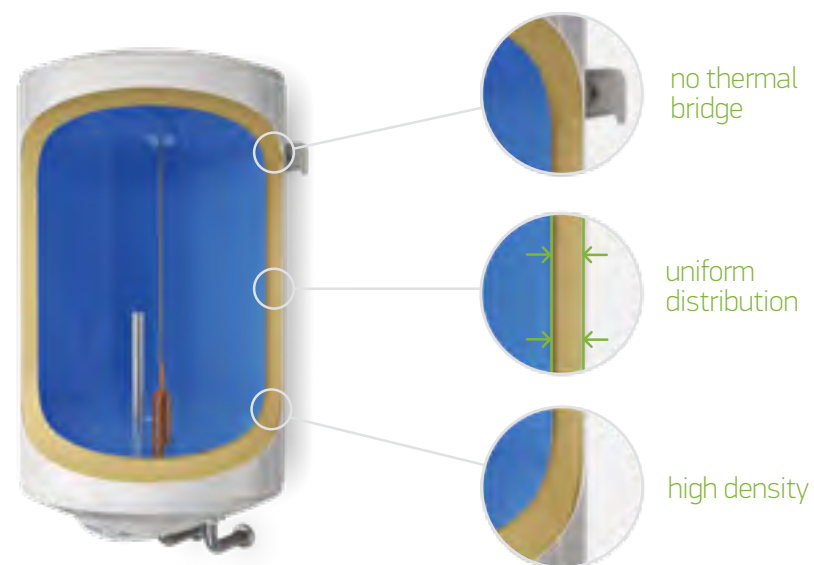


ECO SMART MODE - intelligent & self-learning mode that ensures up to **18% energy savings** on a weekly basis.

ECO Smart operating mode helps reduce the electricity costs without sacrificing the amount of hot water or the user's comfort. The software integrated into the electronic control, similarly to an artificial intelligence, independently tracks and memorises the habits of the user, thus creating a time schedule and managing the appliance's operation. This provides it ensures hot water exactly when it is needed.

The ECO Smart mode also allows a one-off heating-up to the maximum temperature with no change to the established operating schedule (Boost).

INSUTECH



INSUTECH is a special technology that creates a highly efficient insulation for preserving the water hot until the time of usage. It allows the elimination of the thermal bridge between the water tank and the mounting bracket which results in up to 16% lower thermal losses.

The precise parallel alignment of the water tank and the external jacket guarantees high density and uniform distribution of the insulation. The CFC and HCFC free PU formula makes the insulation safe and environmental-friendly.

PISTON EFFECT



REGULAR WATER HEATER

Revolutionary solution for more hot water. The structure of the inlet nozzle creates a **PISTON** – slowing down the infusion of the incoming cold and the already heated water in the appliance by leveling the pressures in the mixing area. With the NEW Piston nozzle a horizontal TESI water heater delivers a comparable quantity of hot water as a vertical one.



PISTON NOZZLE

TESY WATER HEATER

TURBULATOR

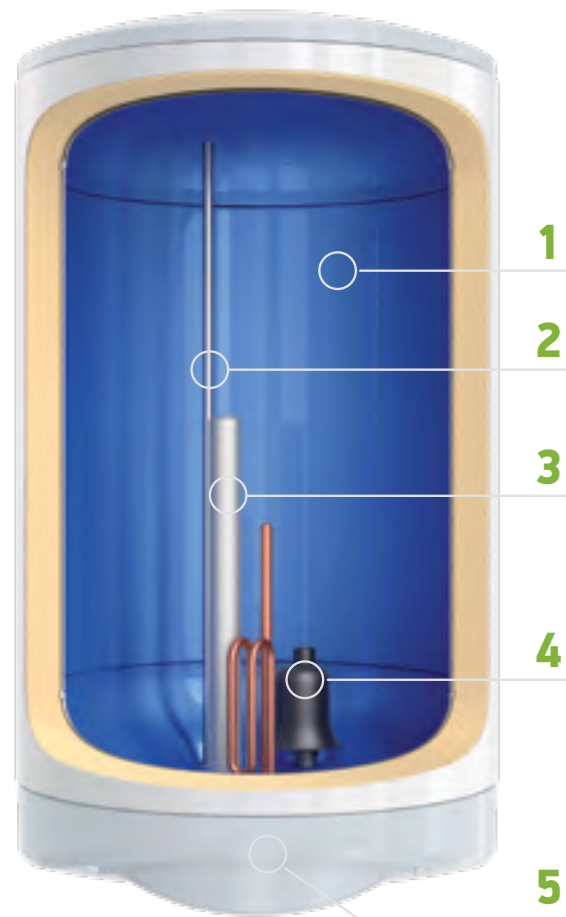


The **TURBULATOR** is a metal element with special perforations integrated along the whole length of the heat exchanger tube. It breaks the hot core of the fluid, circulating through the heat exchanger, pushing it to the inner walls of the latter, thus increasing the efficiency of the thermal transfer to the water inside the tank.

PLASMA WELDING



The **PLASMA WELDING** method ensures a high-quality and durable bond between the edges of the steel sheet forming the cylinder of the water tank by using a computerised and a low welding temperature. The absence of extra materials in the welding process grants a smoother surface, which ensures a high quality enameling.



1 CRYSTALTECH PROTECTION

CrystalTech is a new precise enamel coating of the water tank for protection against corrosion. The technologically higher level of precision of the enamelling process ensures an even distribution along the whole surface. Meanwhile the better adhesion to the metal enhances the durability of the water heater. The higher content of titanium in the enamel powder guarantees the additional strength and longer life of the water tank, regardless of the water quality.

2 STAINLESS STEEL HOT WATER PIPE

The **hot water pipe** of all TESI electric water heaters is made of **stainless steel**, which resists the high temperature and pressure inside the tank, guaranteeing trouble-free operation throughout the water heater's life.

3 ANODE PROTECTOR

The **magnesium anode** protects the CrystalTech enamel coating for trouble-free operation and longer life of the water tank. It easily can be dismantled and replaced.

4 NEW PISTON NOZZLE

Revolutionary solution for more hot water.

5 LARGE FLANGE

The **flange** is large enough to ensure easy cleaning and maintenance of the electric water heater.

UNIVERSAL MOUNTING PLATE

The universal mounting plate is used for easy replacement of a water heater without additional drilling of the wall.

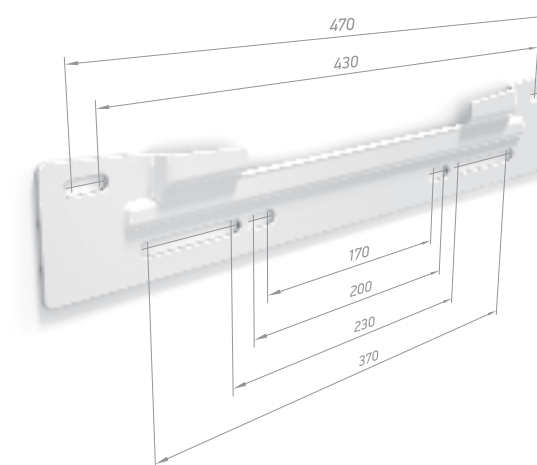
Easy installation in 2 steps:

Step 1: Mount the plate in the already existing openings on the wall

Step 2: Fix the water heater using its own mounting plate (without any additional fixing elements)

Safe and durable

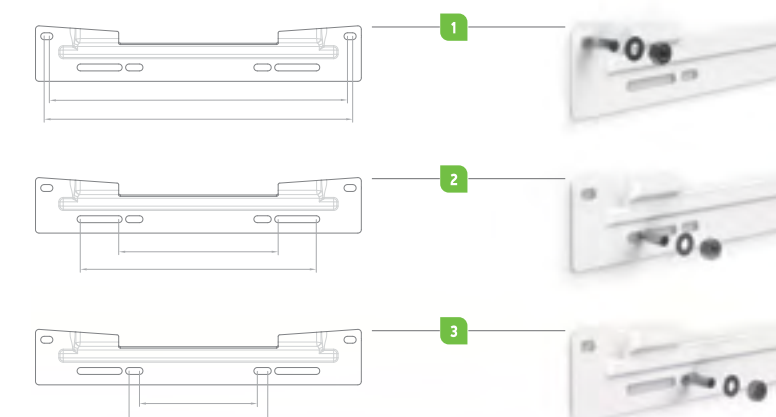
Stylish design



Step 1

Step 2

1, 2, 3 - Variation of the available distance between the holes





Bellislimo

A piece of art

Bellislimo Cloud

Bellislimo Cloud is the latest addition to the TESI Cloud family of products connectable to the Internet. It features intuitive programming and monitoring by means of the TESI Cloud app for iOS and Android.

Bellislimo

Bellislimo sets new industry standards with its modern Italian design and latest technologies. With a slim silhouette and optional vertical or horizontal installation, it offers a first shower in less than 40 minutes.

Bellislimo Dry

Bellislimo Dry is the solution where space-saving in regions with hard or aggressive water is a key priority. Four dry heating elements made of stainless steel ensure protection against limescale, noiseless operation and long product life.



BelliSlimo Cloud

➤ CONTROL VIA INTERNET:

- Easy installation and connection of the water heater to the **TESY Cloud app**
- Real-time monitoring and control of the water heater anytime, anywhere
- Energy consumption monitoring through the energy calculator

➤ COPPER OR DRY HEATING ELEMENTS

➤ ENERGY CLASS B: The highest energy class in its category

➤ REVERSIBLE: Can be installed vertically or horizontally

➤ ECO SMART MODE: Intelligent and self-learning mode that ensures up to 18% energy saving weekly

➤ QUICK FIRST SHOWER: Quickly heats up enough water for your first shower

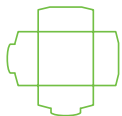
➤ VACATION MODE: Set when you will be back home and how much hot water you will need

➤ BOOST FUNCTION: One-time heating up to the maximum temperature

➤ WEEKLY PROGRAMMING: Allows personalised programming for every day of the week and every hour of the day

➤ REVERSE COUNTER: Counts down until the water heater reaches the desired temperature

➤ Range 50 - 100



REVERSIBLE MODELS



TESY CLOUD



ECO SMART MODE



LCD ELECTRONIC DISPLAY



TOUCH CONTROL PANEL



INSUTECH TECHNOLOGY



NO THERMAL BRIDGE



CRYSTALTECH



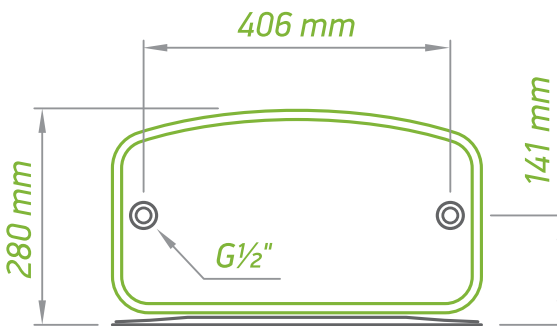
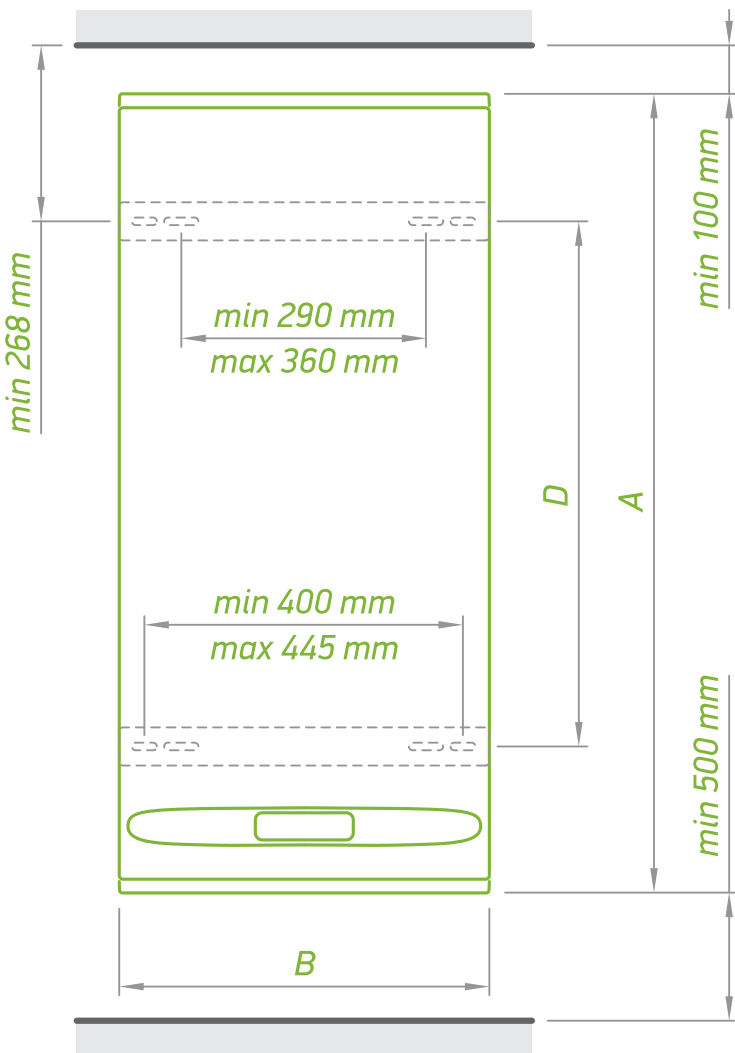
STAINLESS STEEL PIPE



HYGIENIC CERTIFICATE



EASY INSTALLATION



MODEL		BELLISLIMO CLOUD DRY 50	BELLISLIMO CLOUD DRY 80	BELLISLIMO CLOUD DRY 100	BELLISLIMO CLOUD 50	BELLISLIMO CLOUD 80	BELLISLIMO CLOUD 100
CODE		GCR 502724D E31 ECW	GCR 802724D E31 ECW	GCR 1002724D E31 ECW	GCR 502722 E31 ECW	GCR 802722 E31 ECW	GCR 1002722 E31 ECW
Rated power	W	1200 / 2400	1200 / 2400	1200 / 2400	1200/2200	1200/2200	1200/2200
Installation		V H	V H	V H	V H	V H	V H
Heating time -Δ t 45 K (15 - 60° C)		1h 18 min	2h 07 min	2h 36 min	1h 20 min	2h 11 min	2h 41 min
Annual consumption of electricity AEC	kWh	1269 1268	1272 1219	1242 1272	1241 1241	1256 1256	1281 1281
Energy class		B B	B B	B B	B B	B B	B B
Load profile		M M	M M	M M	M M	M M	M M
*T out of box	°C	80 80	80 80	80 80	80 80	80 80	78 69
**V 40	L	83 68	140 105	154 105	80 70	140 109	171 103
***T max	°C	80 80	80 80	80 80	80 80	80 80	78 78
****Max 40	L	83 68	140 105	154 105	80 72	140 109	170 120
Real Volume	L	40	65	80	40	65	80

THE PRESENTED DATA ARE VALID FOR VERTICAL INSTALLATION

*T out of box – the optimal working temperature for the specific electric water heater model, set by the producer

**V 40 – the quantity of hot water, which the electric water heater can produce, while working at T out of box

***T max – the maximal working temperature of the electric water heater

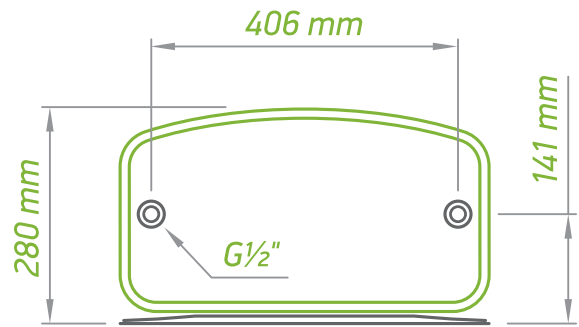
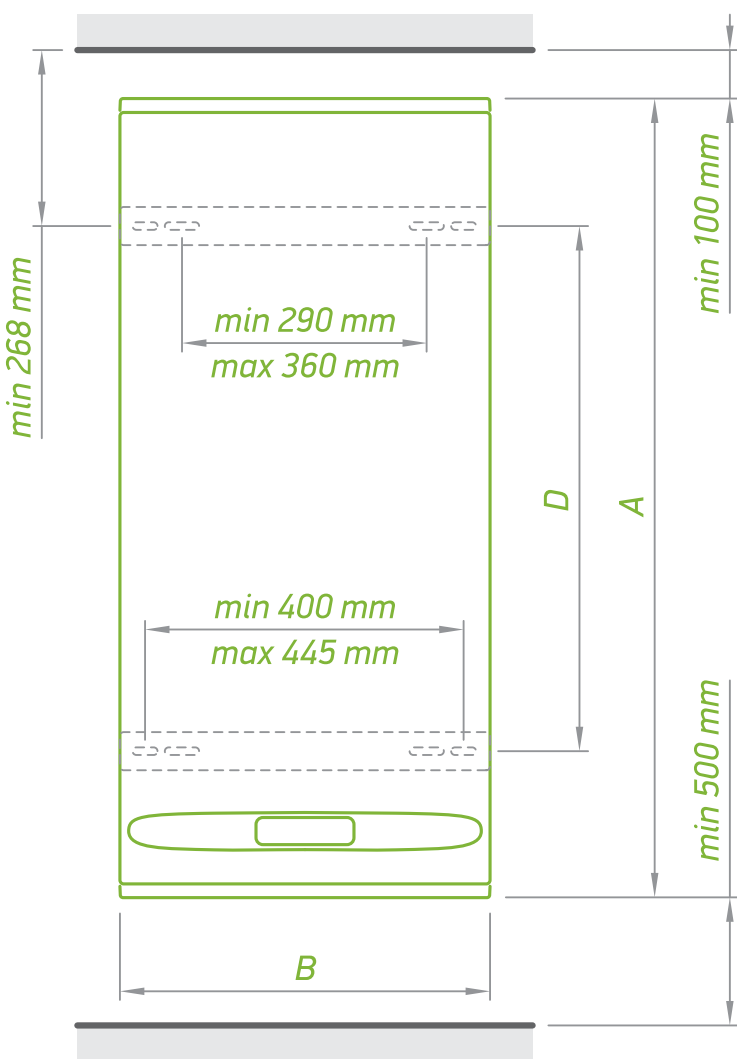
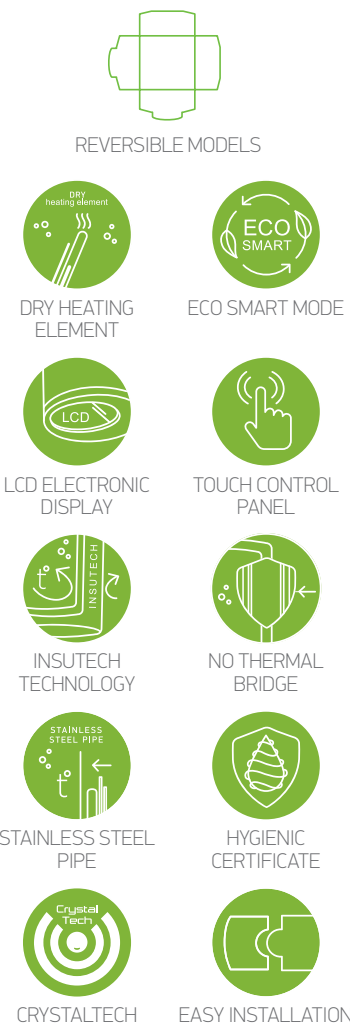
****Max 40 – the maximal quantity of hot water, which the electric water heater can produce, while working at maximum temperature

PRODUCT DIMENSIONS		BELLISLIMO CLOUD DRY 50	BELLISLIMO CLOUD DRY 80	BELLISLIMO CLOUD DRY 100	BELLISLIMO CLOUD 50	BELLISLIMO CLOUD 80	BELLISLIMO CLOUD 100
CODE		GCR 502724D E31 ECW	GCR 802724D E31 ECW	GCR 1002724D E31 ECW	GCR 502722 E31 ECW	GCR 802722 E31 ECW	GCR 1002722 E31 ECW
height (A)	mm	709	1053	1287	709	1053	1279
width (B)	mm	490	490	490	490	490	490
depth (C)	mm	280	280	280	280	280	280
D	mm	405	695	880	405	695	880



BelliSlimo Dry

- **2 DUAL DRY HEATING ELEMENTS**
- **ENERGY CLASS B:** The highest energy class in its category
- **REVERSIBLE:** Can be installed vertically or horizontally
- **ECO SMART MODE:** Intelligent and self-learning mode that ensures up to 18% energy saving weekly
- **DOUBLE TANK:** Two water tanks with separate dry heating elements
- **QUICK FIRST SHOWER:** Quickly heats up enough water for your first shower
- **VACATION MODE:** Set when you will be back home and how much hot water you will need
- **BOOST FUNCTION:** One-time heating up to the maximum temperature
- **WEEKLY PROGRAMMING:** Allows personalised programming for every day of the week and every hour of the day
- **REVERSE COUNTER:** Counts down until the water heater has reached the desired temperature
- Range 50 - 100



MODEL	BELLISLIMO DRY 50		BELLISLIMO DRY 80		BELLISLIMO DRY 100	
CODE	GCR 502724D E31 EC		GCR 802724D E31 EC		GCR 1002724D E31 EC	
Rated power	W	1200 / 2400		1200 / 2400		1200 / 2400
Installation		V	H	V	H	V H
Heating time -Δ t 45 K (15 - 60° C)		1h 18 min		2h 07 min		2h 36 min
Annual consumption of electricity AEC	kWh	1269	1268	1272	1219	1242 1272
Energy class		B	B	B	B	B B
Load profile		M	M	M	M	M M
*T out of box	°C	80	80	80	80	80 80
**V 40	L	83	68	140	105	154 105
***T max	°C	80	80	80	80	80 80
****Max 40	L	83	68	140	105	154 105
Real Volume	L	40		65		80

THE PRESENTED DATA ARE VALID FOR VERTICAL INSTALLATION

*T out of box – the optimal working temperature for the certain electric water heater model, set by the producer

**V 40 – the quantity of hot water, which the electric water heater can produce, while working at T out of box

***T max – the maximal working temperature of the electric water heater

****Max 40 – the maximal quantity of hot water, which the electric water heater can produce, while working at maximum temperature

PRODUCT DIMENSIONS	BELLISLIMO DRY 50		BELLISLIMO DRY 80		BELLISLIMO DRY 100	
CODE	GCR 502724D E31 EC		GCR 802724D E31 EC		GCR 1002724D E31 EC	
height (A)	mm	709	1053	1287		
width (B)	mm	490	490	490		
depth (C)	mm	280	280	280		
D	mm	405	695	880		



BelliSlimo

- **2 COPPER HEATING ELEMENTS**
- **ENERGY CLASS B:** The highest energy class in its category
- **REVERSIBLE:** Can be installed vertically or horizontally
- **ECO SMART MODE:** Intelligent and self-learning mode that ensures up to 18% energy saving weekly
- **DOUBLE TANK:** Two water tanks with separate copper heating elements
- **QUICK FIRST SHOWER:** Quickly heats up enough water for your first shower
- **VACATION MODE:** Set when you will be back home and how much hot water you will need
- **BOOST FUNCTION:** One-time heating up to the maximum temperature
- **WEEKLY PROGRAMMING:** Allows personalised programming for every day of the week and every hour of the day
- **REVERSE COUNTER:** Counts down until the water heater has reached the desired temperature
- Range 30 - 100

MODEL	BELLISLIMO 30		BELLISLIMO 50		BELLISLIMO 80		BELLISLIMO 100	
CODE	GCR 302712 E31 EC		GCR 502722 E31 EC		GCR 802722 E31 EC		GCR 1002722 E31 EC	
Rated power	W	1200/1200	1200/2200	1200/2200	1200/2200	1200/2200	1200/2200	1200/2200
Installation		V H	V H	V H	V H	V H	V H	V H
Heating time –Δ t 45 K (15 - 60° C)	h:min	1:05	1:20	2:11	2:41			
Annual consumption of electricity AEC	kWh	482	493	1241	1241	1256	1256	1281
Energy class		A	B	B	B	B	B	B
Load profile		S	S	M	M	M	M	M
*T out of box	°C	79	79	79	79	78	78	78
**V 40	L	47	45	80	70	140	109	171
***T max	°C	79	79	79	79	78	78	78
****Max 40	L	47	45	80	70	140	109	171
Real Volume	L	25	40	65	80			

THE PRESENTED DATA ARE VALID FOR VERTICAL INSTALLATION

*T out of box – the optimal working temperature for the certain electric water heater model, set by the producer

**V 40 – the quantity of hot water, which the electric water heater can produce, while working at T out of box

***T max – the maximal working temperature of the electric water heater

****Max 40 – the maximal quantity of hot water, which the electric water heater can produce, while working at maximum temperature

REVERSIBLE MODELS

ECO SMART MODE

CRYSTALTECH

LCD ELECTRONIC DISPLAY

TOUCH CONTROL PANEL

INSUTECH TECHNOLOGY

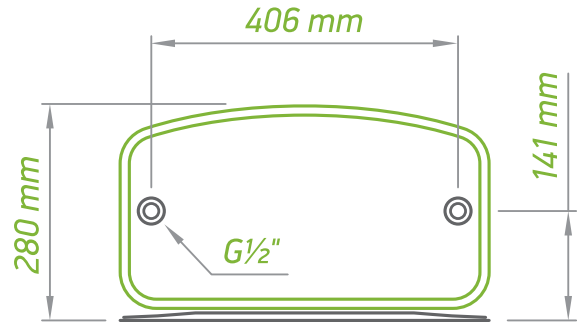
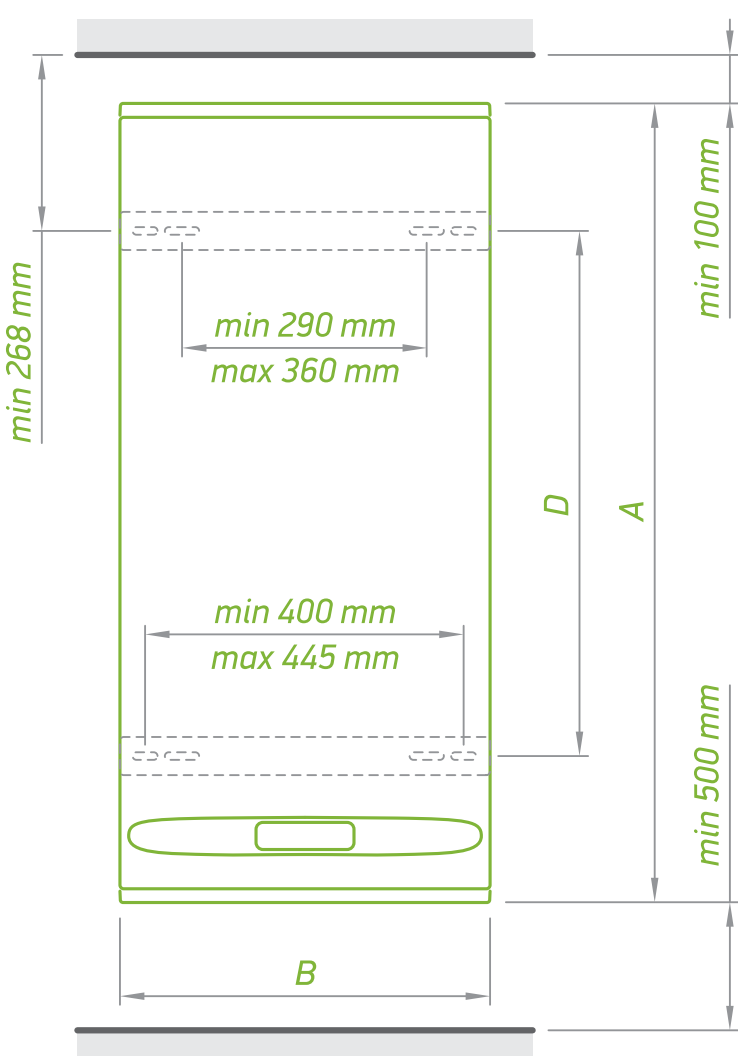
NO THERMAL BRIDGE

STAINLESS STEEL PIPE

HYGIENIC CERTIFICATE

EASY INSTALLATION

COPPER HEATING ELEMENT



PRODUCT DIMENSIONS	BELLISLIMO 30		BELLISLIMO 50		BELLISLIMO 80		BELLISLIMO 100	
CODE	GCR 302712 E31 EC		GCR 502722 E31 EC		GCR 802722 E31 EC		GCR 1002722 E31 EC	
height (A)	mm	492	704	1053	1279			
width (B)	mm	490	490	490	490			
depth (C)	mm	280	280	280	280			
D	mm	165	405	695	880			



ModEco

Modern Design, Smart Technology

- Next-generation electric water heaters, combining modern design and eco-friendly smart technology.
- **ModEco** family accommodates all the product and technological innovations people have come to expect from TESI. The 32 mm highly efficient PU insulation guarantees low thermal losses, meeting the highest requirements of the European markets.
- **ModEco Family** includes:
 - **ModEco Cloud Series** - providing the comfort to monitor and control your water heater via Internet anytime, anywhere
 - **ModEco Electronic Series** - integrated Smart Mode to reduce the energy costs without sacrificing hot water quantity or the user's comfort
 - **ModEco Ceramic Series** - equipped with a ceramic heating element, providing reliable protection against aggressive water
 - **ModEco Series** - including models with a copper heating element, with or without a heat exchanger, as well as models with a double-integrated heat exchanger.



ModEco Cloud

CONTROL VIA INTERNET:

- Easy installation and connection of the water heater to the **TESY Cloud app**
- Real-time monitoring and control of the water heater anytime, anywhere
- Energy consumption monitoring through the energy calculator

➤ **INDOOR CONNECT:** Control the device directly through a local network: no internet connection required

➤ **ENERGY CLASS B:** The highest energy class in its category

CERAMIC HEATING ELEMENT

- Limescale protection
- Noiseless operation
- Easy maintenance

➤ **ECO SMART MODE:** Intelligent and self-learning mode that ensures up to 18% energy saving weekly

➤ **AUTOMATIC ANTILEGIONELLA CYCLE:** Automatic Antilegionella setting neutralises germs in the water tank

➤ **EXTRA PROTECTION FOR LONGER LIFE:** An alert activates when there is no water in the tank and switches off the appliance

➤ **VACATION MODE:** Set when you will be back home and how much hot water you will need

➤ **BOOST FUNCTION:** One-time heating up to the maximum temperature

➤ **WEEKLY PROGRAMMING:** Allows personalised programming for every day of the week and every hour of the day

➤ Range 50 L - 150 L

MODEL		MODECO CLOUD 50	MODECO CLOUD 80	MODECO CLOUD 100	MODECO CLOUD 120	MODECO CLOUD 150
CODE		GCV 504716D C22 ECW	GCV 804724D C22 ECW	GCV 1004724D C22 ECW	GCV 1204724D C22 ECW	GCV 1504724D C22 ECW
Real Volume	L	50	82	100	120	143
Diameter	mm	470	470	470	470	470
Rated power	W	1600	2400	2400	2400	2400
Heating time -Δ t 45 K (15 - 60° C)		1 h 37 min	1 h 47 min	2 h 10 min	2 h 36 min	3 h 05 min
Annual consumption of electricity AEC	kWh	1204	1103	1238	2500	2483
Energy class		B	B	B	C	C
Load profile		M	M	M	L	L
*T out of box	°C	70	70	70	70	70
**V 40	L	84	142	166	222	261
***T max	°C	75	75	75	75	75
****Max 40	L	94	154	192	236	279
Insulation	mm	32	32	32	32	32

THE PRESENTED DATA ARE VALID FOR VERTICAL INSTALLATION

*T out of box – the optimal working temperature for the certain electric water heater model, set by the producer

**V 40 – the quantity of hot water, which the electric water heater can produce, while working at T out of box

***T max – the maximal working temperature of the electric water heater

****Max 40 – the maximal quantity of hot water, which the electric water heater can produce, while working at maximum temperature



TESY CLOUD



ECO SMART MODE



INSUTECH TECHNOLOGY



TOUCH CONTROL PANEL



PISTON EFFECT



NO THERMAL BRIDGE



CERAMIC HEATING ELEMENT



STAINLESS STEEL PIPE



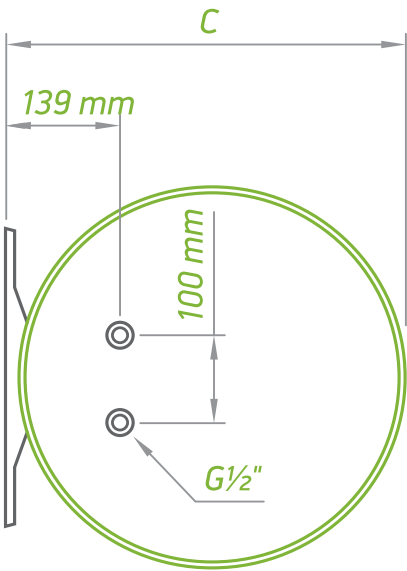
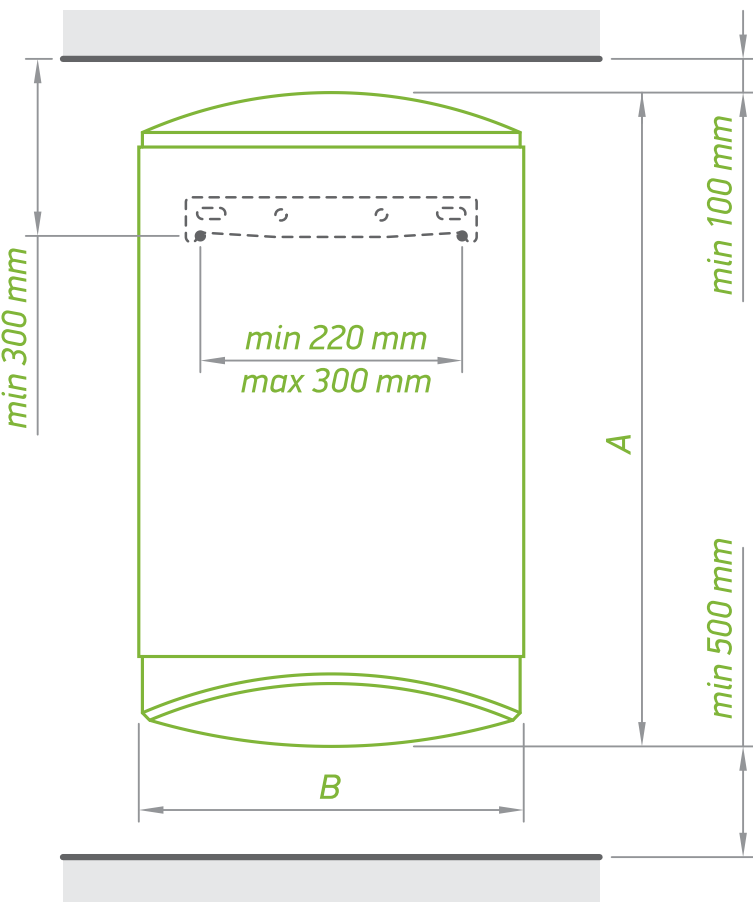
CRYSTALTECH



HYGIENIC CERTIFICATE



PLASMA WELDING



PRODUCT DIMENSIONS		MODECO CLOUD 50	MODECO CLOUD 80	MODECO CLOUD 100	MODECO CLOUD 120	MODECO CLOUD 150
CODE		GCV 504716D C22 ECW	GCV 804724D C22 ECW	GCV 1004724D C22 ECW	GCV 1204724D C22 ECW	GCV 1504724D C22 ECW
height (A)	mm	595	845	985	1150	1315
width (B)	mm	470	470	470	470	470
depth (C)	mm	496	496	496	496	496



ModEco Ceramic

- **ENERGY CLASS B:** The highest energy class in its category (for 80 L and 100 L models)
- **CERAMIC HEATING ELEMENT:**
 - Limescale protection
 - Noiseless operation
 - Easy maintenance without draining
 - Two power settings
- **BILIGHT INDICATION:**
 - Red light for Heating mode
 - Blue light for Ready-to-use mode
- Range 50 L - 150 L

BILIGHT

BILIGHT FUNCTION

CAPILLARY THERMOSTAT

INSUTECH TECHNOLOGY

NO THERMAL BRIDGE

PISTON EFFECT

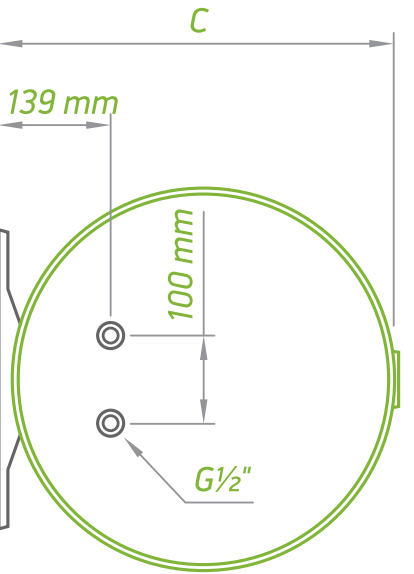
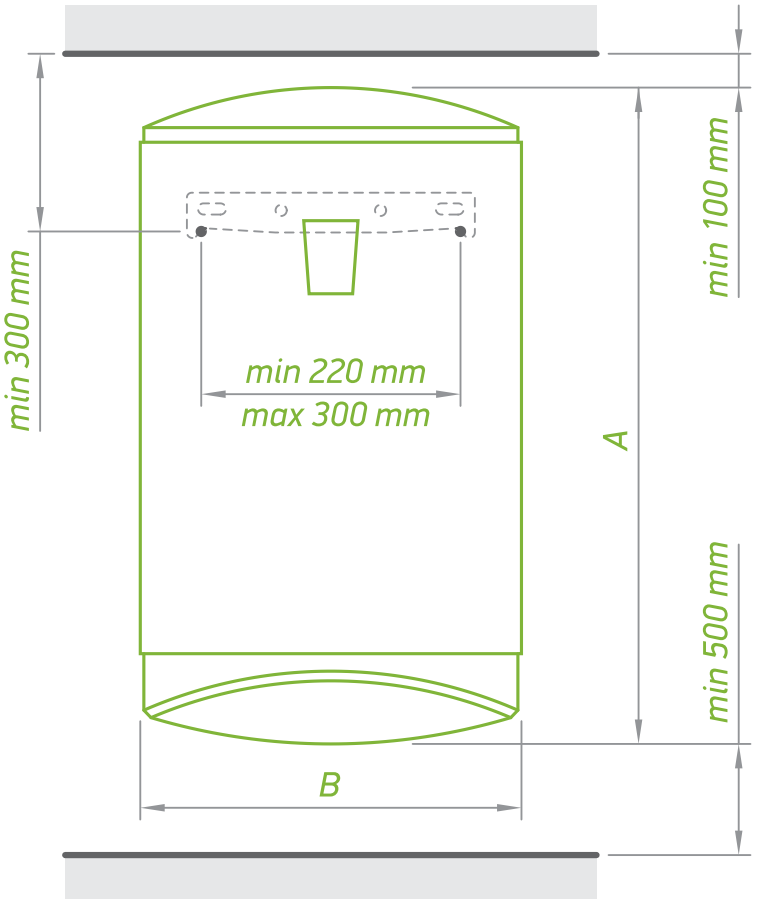
STAINLESS STEEL PIPE

CERAMIC HEATING ELEMENT

HYGIENIC CERTIFICATE

CRYSTALTECH

PLASMA WELDING



MODEL		MODECO CERAMIC 50	MODECO CERAMIC 80	MODECO CERAMIC 100	MODECO CERAMIC 120	MODECO CERAMIC 150
CODE		GCV 504716D C21 TS2R	GCV 804724D C21 TS2R	GCV 1004724D C21 TS2R	GCV 1204724D C21 TS2R	GCV 1504724D C21 TS2R
Real Volume	L	50	82	100	120	142
Diameter	mm	470	470	470	470	470
Rated power	W	800 / 1600	1200 / 2400	1200 / 2400	1200 / 2400	1200 / 2400
Heating time -Δ t 45 K (15 - 60° C)		3 h 15 min 1 h 37 min	3 h 34 min 1 h 47 min	4 h 21 min 2 h 10 min	5 h 13 min 2 h 36 min	6 h 10 min 3 h 05 min
Annual consumption of electricity AEC	kWh	1360	1315	1314	2652	4303
Energy class		C	B	B	C	C
Load profile		M	M	M	L	XL
*T out of box	°C	60	70	60	60	70
**V 40	L	71	145	145	161	249
***T max	°C	70	70	70	70	70
****Max 40	L	86	145	171	175	249
Insulation	mm	32	32	32	32	32

THE PRESENTED DATA ARE VALID FOR VERTICAL INSTALLATION

*T out of box – the optimal working temperature for the certain electric water heater model, set by the producer

**V 40 – the quantity of hot water, which the electric water heater can produce, while working at T out of box

***T max – the maximal working temperature of the electric water heater

****Max 40 – the maximal quantity of hot water, which the electric water heater can produce, while working at maximum temperature

PRODUCT DIMENSIONS		MODECO CERAMIC 50	MODECO CERAMIC 80	MODECO CERAMIC 100	MODECO CERAMIC 120	MODECO CERAMIC 150
CODE		GCV 504716D C21 TS2R	GCV 804724D C21 TS2R	GCV 1004724D C21 TS2R	GCV 1204724D C21 TS2R	GCV 1504724D C21 TS2R
height (A)	mm	595	845	985	1150	1315
width (B)	mm	470	470	470	470	470
depth (C)	mm	496	496	496	0496	496



BiLight

Elegance meets functionality

- A wide range of elegant electric water heaters providing hot water to several points of use at a time. Abundant selection of vertical and horizontal models that easily fit in narrow and limited spaces. Various models with one or two integrated heat exchangers for connection to alternative energy sources.
- A distinctive feature of all **BiLight** electric water heaters is the two-colour indication, which visualises the two operating modes: red light for Heating Mode and blue light for Ready-to-use Mode.

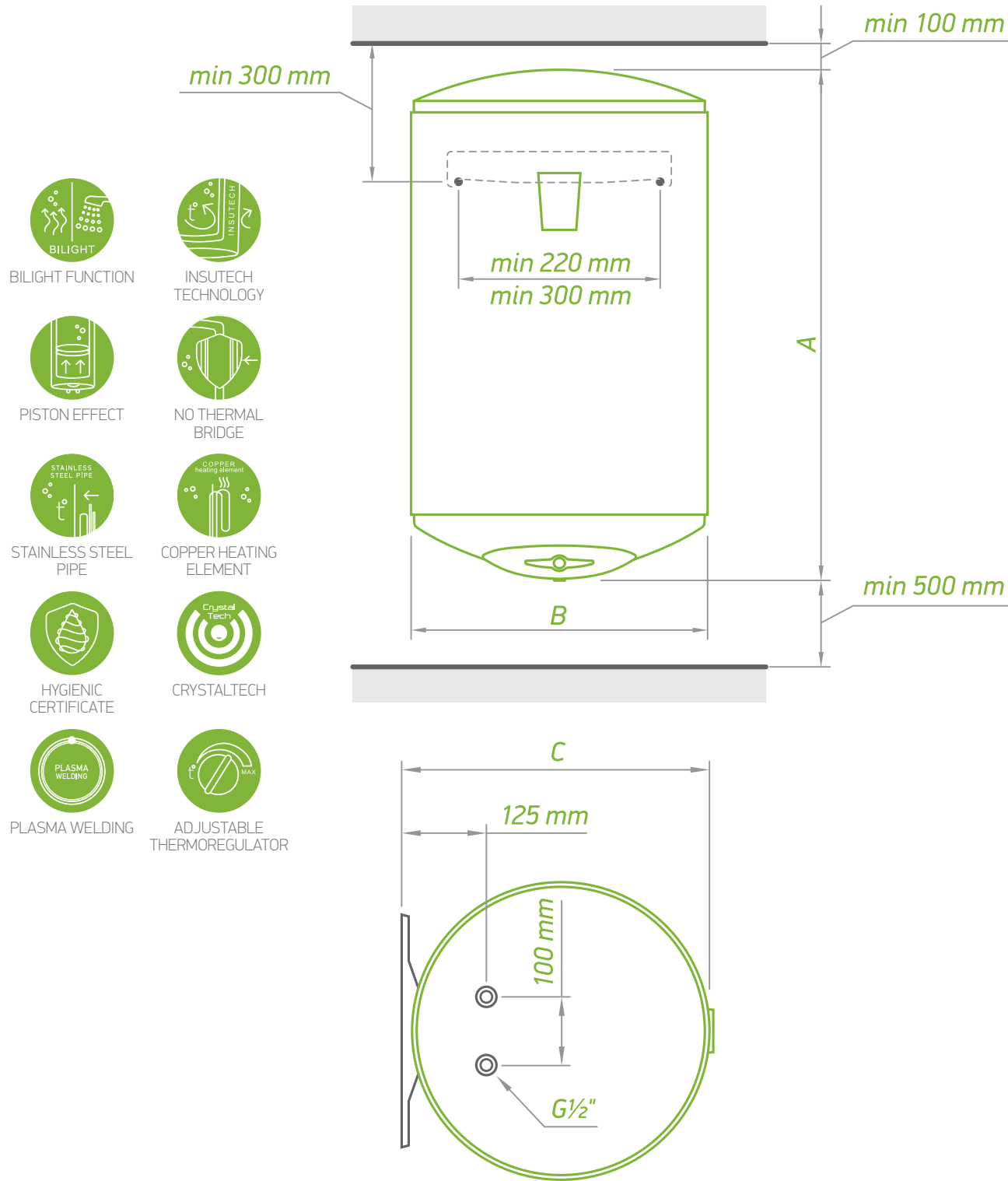


BiLight

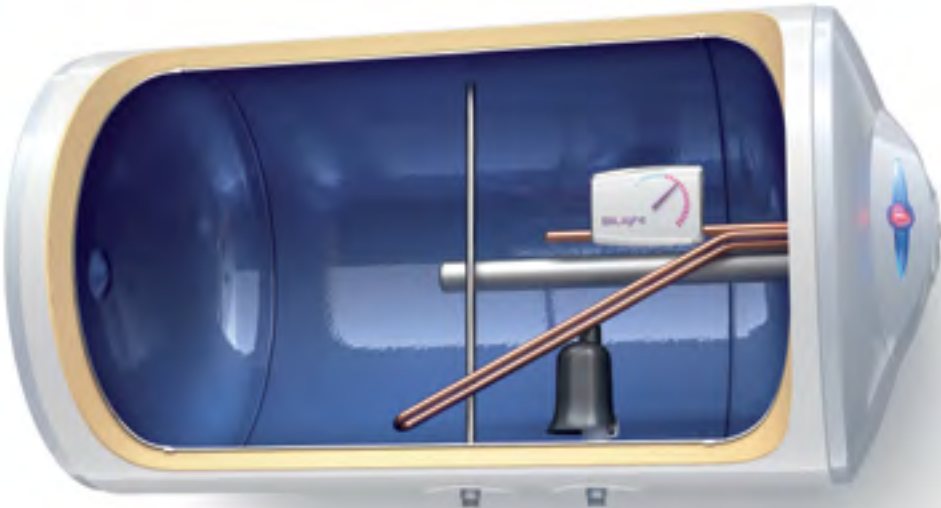
- **COPPER HEATING ELEMENT**
- **BILIGHT INDICATION:**
 - Red light for Heating mode
 - Blue light for Ready-to-use mode
- **ON/OFF** switch
- **ANTI-FREEZE** function
- **ECO SETTING** of the thermoregulator for cost efficient and long-lasting operation
- Range 50 L - 150 L

MODEL		BILIGHT 50	BILIGHT 80	BILIGHT 100	BILIGHT 120	BILIGHT 150
CODE		GCV 504415 B11 TSR	GCV 804420 B11 TSR	GCV 1004420 B11 TSR	GCV 1204420 B11 TSR	GCV 1504420 B11 TSR
Real Volume	L	50	82	100	120	143
Diameter	mm	440	440	440	440	440
Rated power	W	1500	2000	2000	2000	2000
Heating time –Δ t 45 K (15 - 60° C)		1 h 44 min	2 h 08 min	2 h 36 min	3 h 08 min	3 h 44 min
Annual consumption of electricity AEC	kWh	1421	2762	2734	4406	4404
Energy class		C	C	C	C	C
Load profile		M	L	L	XL	XL
*T out of box	°C	60	70	60	70	65
**V 40	L	77	145	150	218	233
***T max	°C	70	70	70	70	70
****Max 40	L	86	145	176	218	257
Insulation	mm	18	18	18	18	18

*T out of box – the optimal working temperature for the certain electric water heater model, set by the producer
**V 40 – the quantity of hot water, which the electric water heater can produce, while working at T out of box
***T max – the maximal working temperature of the electric water heater
****Max 40 – the maximal quantity of hot water, which the electric water heater can produce, while working at maximum temperature



PRODUCT DIMENSIONS		BILIGHT 50	BILIGHT 80	BILIGHT 100	BILIGHT 120	BILIGHT 150
CODE		GCV 504415 B11 TSR	GCV 804420 B11 TSR	GCV 1004420 B11 TSR	GCV 1204420 B11 TSR	GCV 1504420 B11 TSR
height (A)	mm	595	845	985	1150	1315
width (B)	mm	440	440	440	440	440
depth (C)	mm	467	467	467	467	467



BiLight Horizontal

- **NEW PISTON NOZZLE:** Revolutionary solution for more hot water*
- **COPPER HEATING ELEMENT**
- **BILIGHT INDICATION:**
 - Red light for Heating mode
 - Blue light for Ready-to-use mode
- **ON/OFF** switch
- **ANTI-FREEZE** function
- **ECO SETTING** of the thermoregulator for cost efficient and long-lasting operation
- Range 30 L - 150 L

BILIGHT FUNCTION

CAPILLARY THERMOSTAT

INSUTECH TECHNOLOGY

NO THERMAL BRIDGE

COPPER HEATING ELEMENT

PISTON EFFECT

STAINLESS STEEL PIPE

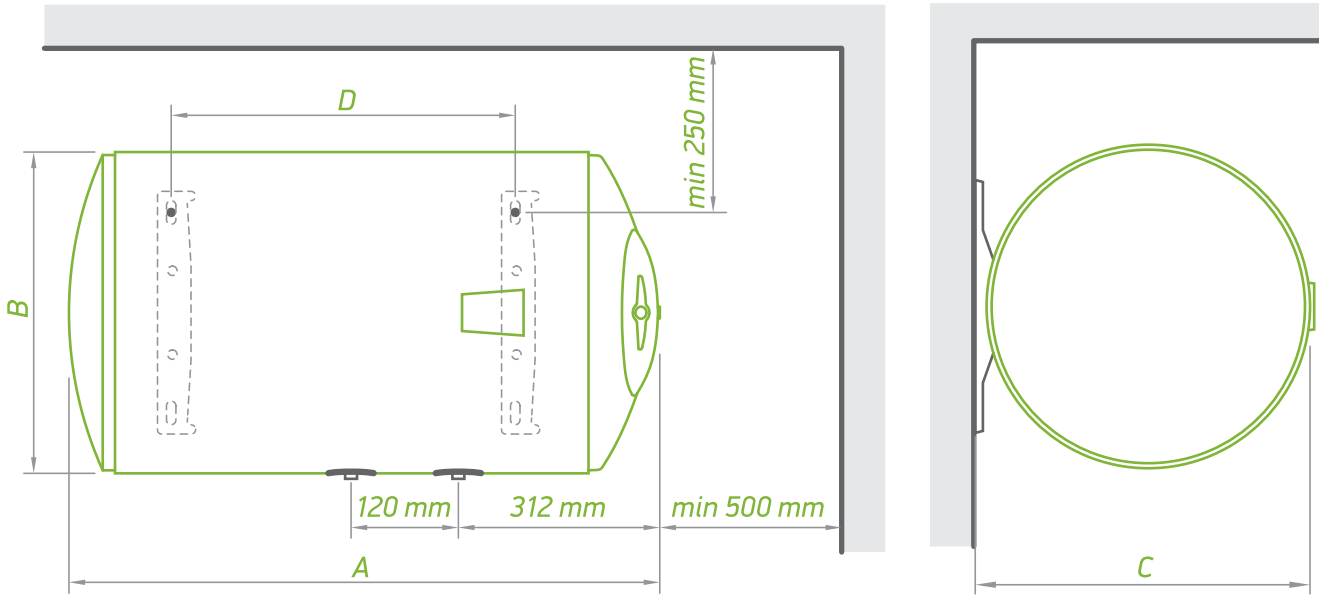
CRYSTALTECH

PLASMA WELDING

HYGIENIC CERTIFICATE

ADJUSTABLE THERMOREGULATOR

*Up to 40% more hot water, depending on the specific model, compared to TESI BiLight horizontal models with previous PISTON nozzles.
With the NEW Piston nozzle a horizontal TESI water heater delivers a comparable quantity of hot water as a vertical one.



MODEL		BILIGHT SLIM 30 H	BILIGHT SLIM 50 H	BILIGHT 80 H	BILIGHT 100 H	BILIGHT 120 H	BILIGHT 150 H
CODE		GCHL 303515 B12 TSRC	GCH 503520 B12 TSR	GCH 804420 B12 TSR	GCH 1004420 B12 TSRC	GCH 1204430 B12 TSR	GCH 1504430 B12 TSRC
Real Volume	L	30	50	82	100	120	143
Diameter	mm	353	353	440	440	440	440
Rated power	W	1500	2000	2000	2000	3000	3000
Heating time –Δ t 45 K (15 - 60° C)		1h 02 min	1 h 18 min	2 h 08 min	2 h 36 min	2 h 05 min	2 h 29 min
Annual consumption of electricity AEC	kWh	577	1418	1422	2750	2727	4540
Energy class		C	C	C	C	C	C
Load profile		S	M	M	L	L	L
*T out of box	°C	60	70	60	75	70	60
**V 40	L	30	78	111	138	160	240
***T max	°C	70	70	70	75	70	70
****Max 40	L	36	78	146	177	213	240
Insulation	mm	18	18	18	18	18	18

PRODUCT DIMENSIONS		BILIGHT SLIM 30 H	BILIGHT SLIM 50 H	BILIGHT 80 H	BILIGHT 100 H	BILIGHT 120 H	BILIGHT 150 H
height (B)	mm	353	353	440	440	440	440
width (A)	mm	566	803	855	995	1160	1325
depth (C)	mm	380	380	467	467	467	467
D	mm	241	411	407	552	702	927

*T out of box – the optimal working temperature for the certain electric water heater model, set by the producer
**V 40 – the quantity of hot water, which the electric water heater can produce, while working at T out of box
***T max – the maximal working temperature of the electric water heater
****Max 40 – the maximal quantity of hot water, which the electric water heater can produce, while working at maximum temperature



Anticalc

Perfect protection against limescale

- The water heaters in the **Anticalc** family have been developed for long-term and reliable operation in households supplied with hard, highly mineralised and/or chemically aggressive water. The enlarged surface of the dual heating element, housed in an enamelled steel enclosures with a smooth surface, substantially slows down and limits the process of limescale deposit.
- The appliances in the family work noiselessly and are easy to service, as they do not require preliminary draining of the water tank.
- The **Anticalc** family includes **Anticalc**, **Anticalc Slim** and **Anticalc Reversible** series.



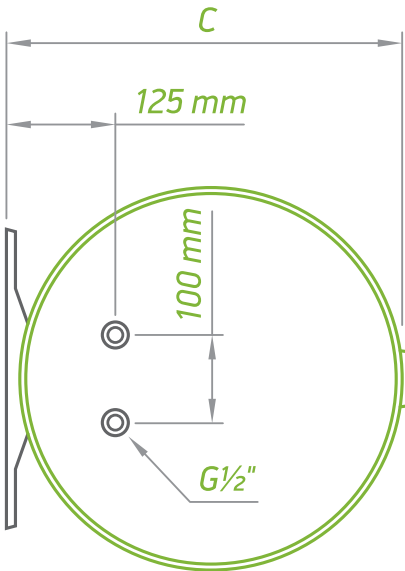
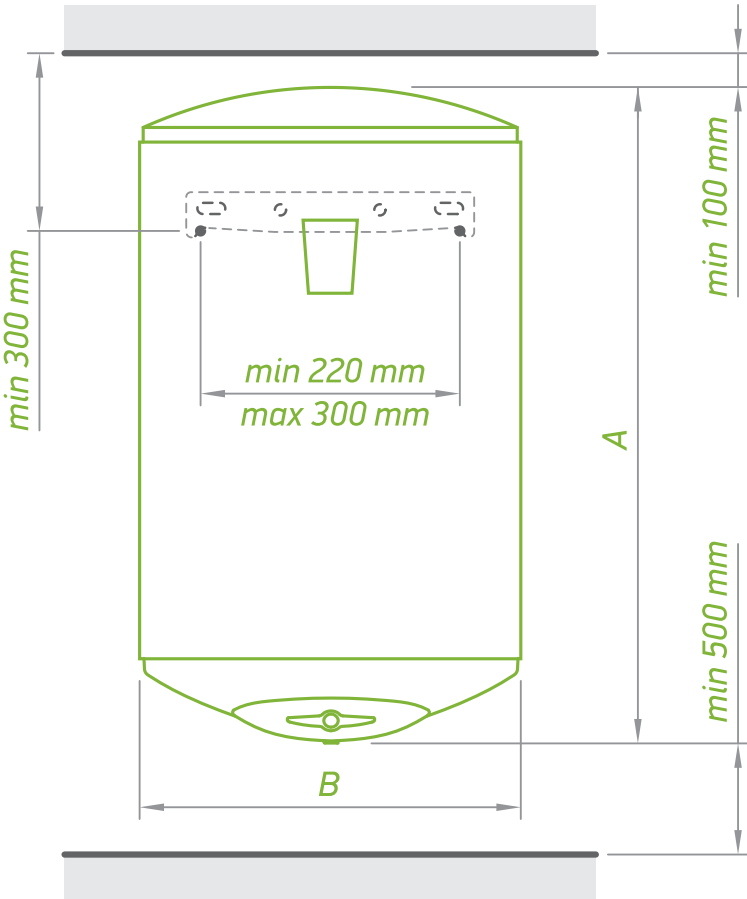
Anticalc

- DUAL DRY HEATING ELEMENT:**
 - Limescale protection
 - Noiseless operation
 - Easy maintenance
 - Two power settings
- EXTERNAL REGULATOR**
- COST EFFICIENT OPERATION**
- PRECISE CAPILLARY THERMOSTAT**
- EXTENDED PRODUCT LIFE:** due to the dry heating element
- BOOST:** Turns on the second power setting of the heating element
- BILIGHT INDICATION:**
 - Red light for Heating mode
 - Blue light for Ready-to-use mode
- Range 50 L - 150 L

MODEL	ANTICALC 50		ANTICALC 80		ANTICALC 100		ANTICALC 120		ANTICALC 150	
CODE	GCV 504416D B14 TBR(C)		GCV 804424D B14 TBR(C)		GCV 1004424D B14 TBR(C)		GCV 1204424D B14 TBR(C)		GCV 1504424D B14 TBR(C)	
Real Volume	L	50	82	100	120	143				
Diameter	mm	440	440	440	440	440				
Rated power	W	1600 / 800	2400 / 1200	2400 / 1200	2400 / 1200	2400 / 1200				
Heating time –Δ t 45 K (15 - 60° C)		1 h 37 min 3 h 15 min	1 h 47 min 3 h 34 min	2 h 10 min 4 h 20 min	2 h 36 min 5 h 13 min	3 h 07 min 6 h 13 min				
Annual consumption of electricity AEC	kWh	1392	2748	2756	4346	4377				
Energy class		C	C	C	C	C				
Load profile		M	L	L	XL	XL				
*T out of box	°C	60	70	60	70	65				
**V 40	L	74	147	142	219	232				
***T max	°C	70	70	70	70	70				
****Max 40	L	88	147	170	219	257				
Insulation	mm	18	18	18	18	18				

*T out of box – the optimal working temperature for the certain electric water heater model, set by the producer
**V 40 – the quantity of hot water, which the electric water heater can produce, while working at T out of box
***T max – the maximal working temperature of the electric water heater
****Max 40 – the maximal quantity of hot water, which the electric water heater can produce, while working at maximum temperature

- BILIGHT FUNCTION
- INSUTECH TECHNOLOGY
- PISTON EFFECT
- DRY HEATING ELEMENT
- CRYSTALTECH
- LIMESCALE PROTECTION
- CAPILLARY THERMOSTAT
- NO THERMAL BRIDGE
- STAINLESS STEEL PIPE
- HYGIENIC CERTIFICATE
- PLASMA WELDING



PRODUCT DIMENSIONS	ANTICALC 50		ANTICALC 80		ANTICALC 100		ANTICALC 120		ANTICALC150	
CODE	GCV 504416D B14 TBR(C)		GCV 804424D B14 TBR(C)		GCV 1004424D B14 TBR(C)		GCV 1204424D B14 TBR(C)		GCV 1504424D B14 TBR(C)	
height (A)	mm	608	858	998	1163	1327				
width (B)	mm	440	440	440	440	440				
depth (C)	mm	467	467	467	467	467				

Anticalc Reversible



Anticalc Reversible

- **REVERSIBLE:** Can be installed vertically or horizontally
- **DRY HEATING ELEMENT:**
 - Limescale protection
 - Noiseless operation
 - Easy maintenance
 - Two power settings
- **EXTERNAL THERMO REGULATOR**
- **PRECISE CAPILLARY THERMOSTAT**
- **EXTENDED PRODUCT LIFE:** due to the dry heating element
- **BOOST:** Turns on the second power setting of the heating element
- **BILIGHT INDICATION:**
 - Red light for Heating mode
 - Blue light for Ready-to-use mode
- Range 50 L - 150 L

MODEL		ANTICALC 50 REV	ANTICALC 80 REV	ANTICALC 100 REV	ANTICALC 120 REV	ANTICALC 150 REV
CODE		GCR 504416D B14 TBRC	GCR 804424D B14 TBRC	GCR 1004424D B14 TBRC	GCR 1204424D B14 TBRC	GCR 1504424D B14 TBRC
Real Volume	L	50	82	100	120	143
Diameter	mm	440	440	440	440	440
Rated power	W	1600 / 800	2400 / 1200	2400 / 1200	2400 / 1200	2400 / 1200
Heating time –Δ t 45 K (15 - 60° C)		1 h 37 min 3 h 15 min	1 h 47 min 3 h 34 min	2 h 10 min 4 h 21 min	2 h 36 min 5 h 13 min	3 h 07 min 6 h 13 min
Annual consumption of electricity AEC	kWh	1392	2748	2756	4346	4377
Energy class		C	C	C	C	C
Load profile		M	L	L	XL	XL
*T out of box	°C	60	70	60	70	65
**V 40	L	74	147	142	219	232
***T max	°C	70	70	70	70	70
****Max 40	L	88	147	170	219	257
Insulation	mm	18	18	18	18	18

*T out of box – the optimal working temperature for the certain electric water heater model, set by the producer
**V 40 – the quantity of hot water, which the electric water heater can produce, while working at T out of box
***T max – the maximal working temperature of the electric water heater
****Max 40 – the maximal quantity of hot water, which the electric water heater can produce, while working at maximum temperature

Anticalc Reversible

REVERSIBLE MODELS

BILIGHT FUNCTION

INSUTECH TECHNOLOGY

PISTON EFFECT

DRY HEATING ELEMENT

CRYSTALTECH

LIMESCALE PROTECTION

CAPILLARY THERMOSTAT

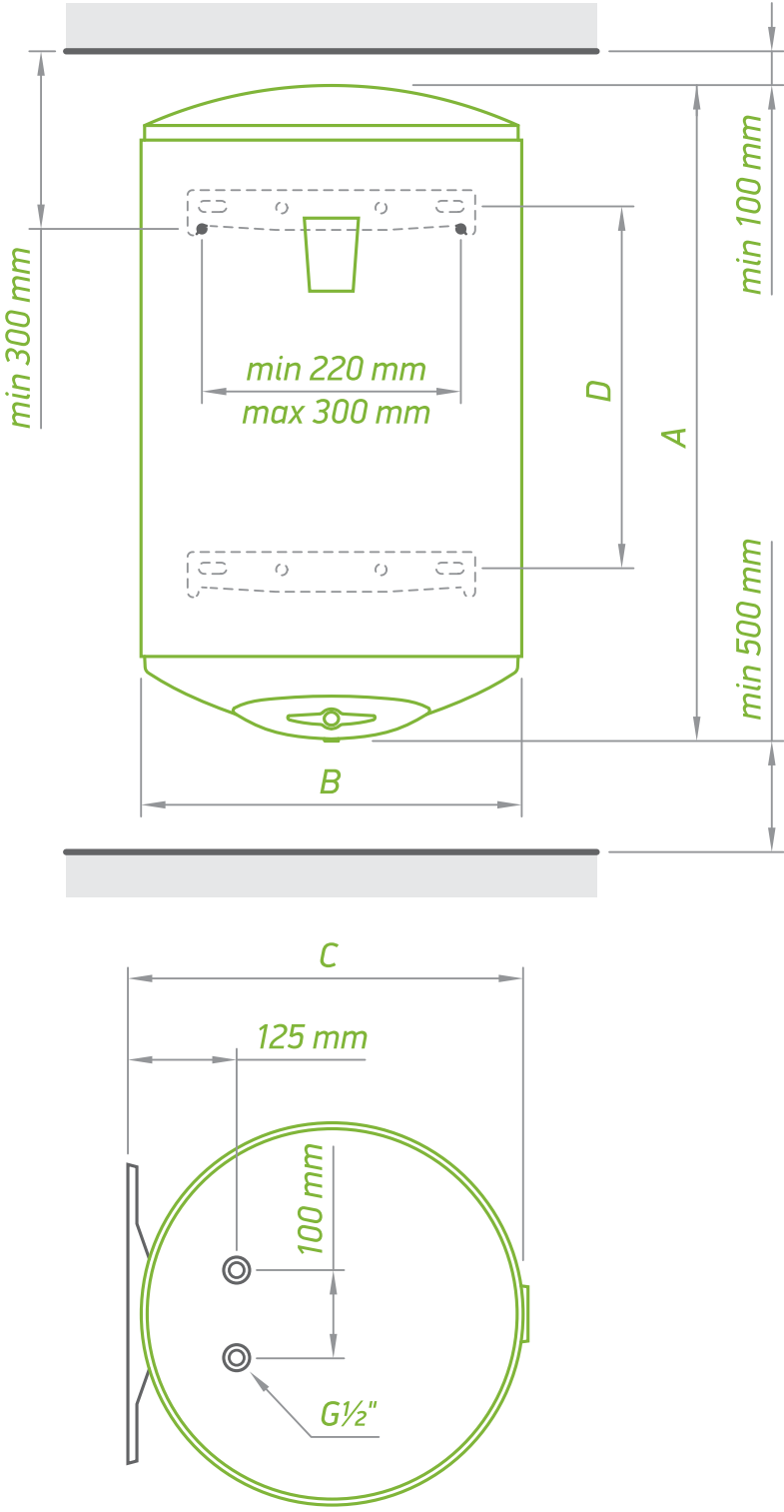
NO THERMAL BRIDGE

STAINLESS STEEL PIPE

HYGIENIC CERTIFICATE

PLASMA WELDING

CAPILLARY THERMOSTAT



PRODUCT DIMENSIONS		ANTICALC 50 REV	ANTICALC 80 REV	ANTICALC 100 REV	ANTICALC 120 REV	ANTICALC 150 REV
CODE		GCR 504416D B14 TBRC	GCR 804424D B14 TBRC	GCR 1004424D B14 TBRC	GCR 1204424D B14 TBRC	GCR 1504424D B14 TBRC
height (A)	mm	608	858	998	1163	1327
width (B)	mm	440	440	440	440	440
depth (C)	mm	467	467	467	467	467
D	mm	183	407	552	702	827



Compact

Small footprint, big performance

- The water heaters of the **Compact family** are suitable for installation in small and narrow spaces close to the point of use of hot water. Depending on the room interior and the existing utilities, such appliances can be installed under or above a sink or mixing tap. The Compact family includes electric water heaters with capacities from 5 L to 30 L.
- The flat base of the models for under-the-point-of-use installation allows direct on-floor or in-cupboard placement, which avoids wall drilling.

Compact 7



Compact 7

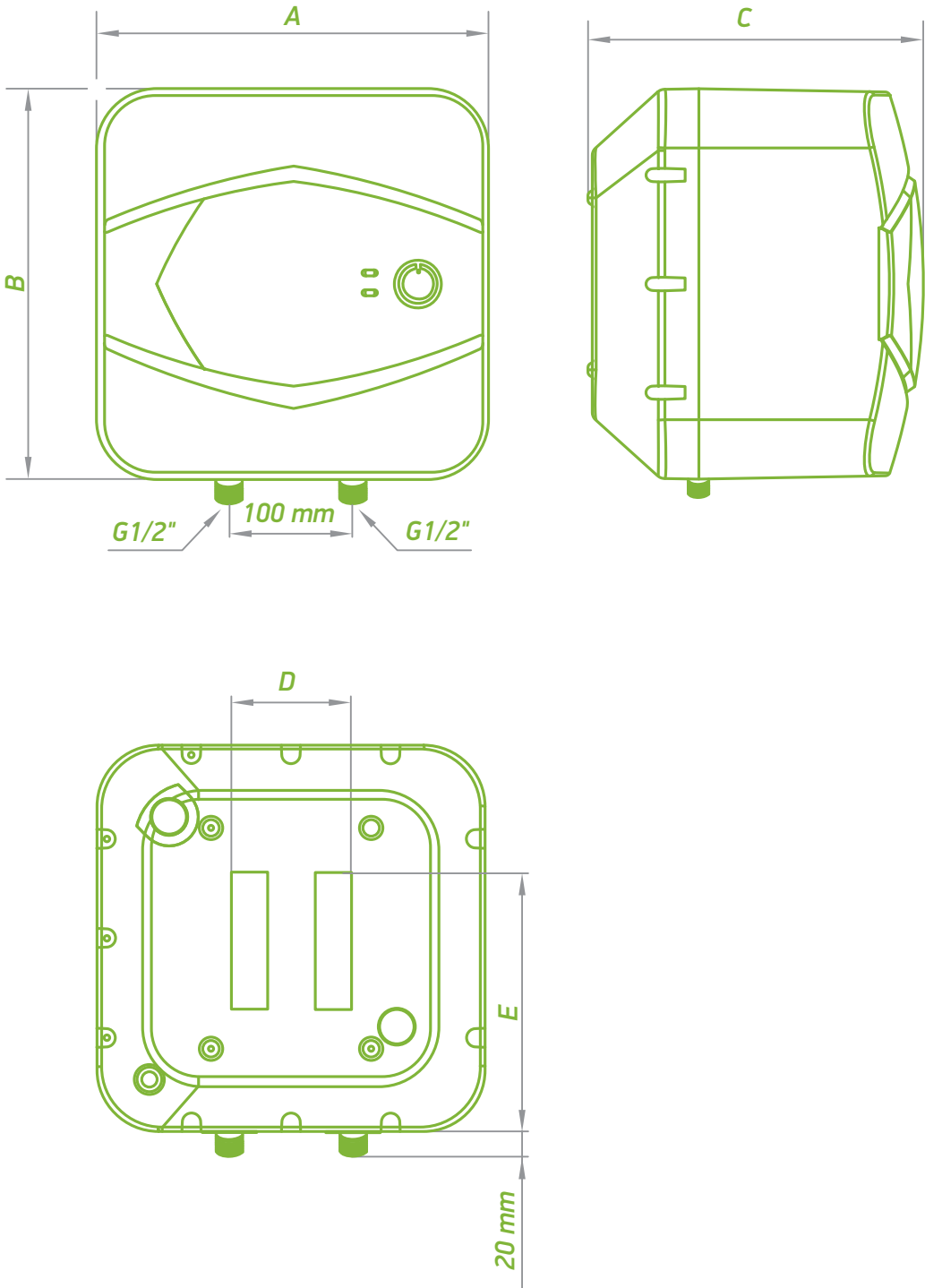
- COPPER HEATING ELEMENT
- ANTICORROSION PROTECTION due to enamel coating
- POLYURETHANE INSULATION
- LIGHT INDICATION FOR:
 - Power supply
 - Working mode
- ABOVE AND UNDER THE SINK INSTALLATION
- FLOOR STANDING INSTALLATION for under sink model

MODEL		COMPACT 7 A	COMPACT 7 U
CODE		GCA 0715 G01 RC	GCU 0715 G01 RC
Real Volume	L	6.5	6.5
Rated power	W	1500	1500
Heating time –Δ t 45 K (15 - 60° C)		0 h 14 min	0 h 14 min
Annual consumption of electricity AEC	kWh	525	550
Energy class		A	B
Load profile		XXS	XXS
*T out of box	°C	65	65
**V 40	L	12	11
***T max	°C	65	65
****Max 40	L	12	11

*T out of box – the optimal working temperature for the certain electric water heater model, set by the producer
**V 40 – the quantity of hot water, which the electric water heater can produce, while working at T out of box
***T max – the maximal working temperature of the electric water heater
****Max 40 – the maximal quantity of hot water, which the electric water heater can produce, while working at maximum temperature

Compact 7

- EASY INSTALLATION
- ADJUSTABLE THERMOREGULATOR
- ANODE PROTECTOR
- COMPACT SIZE
- ABOVE SINK INSTALLATION
- UNDER SINK INSTALLATION



PRODUCT DIMENSIONS		COMPACT 7 A	COMPACT 7 U
CODE		GCA 0715 G01 RC	GCU 0715 G01 RC
height (A)	mm	315	315
width (B)	mm	315	315
depth (C)	mm	278	278

Compact 10/15



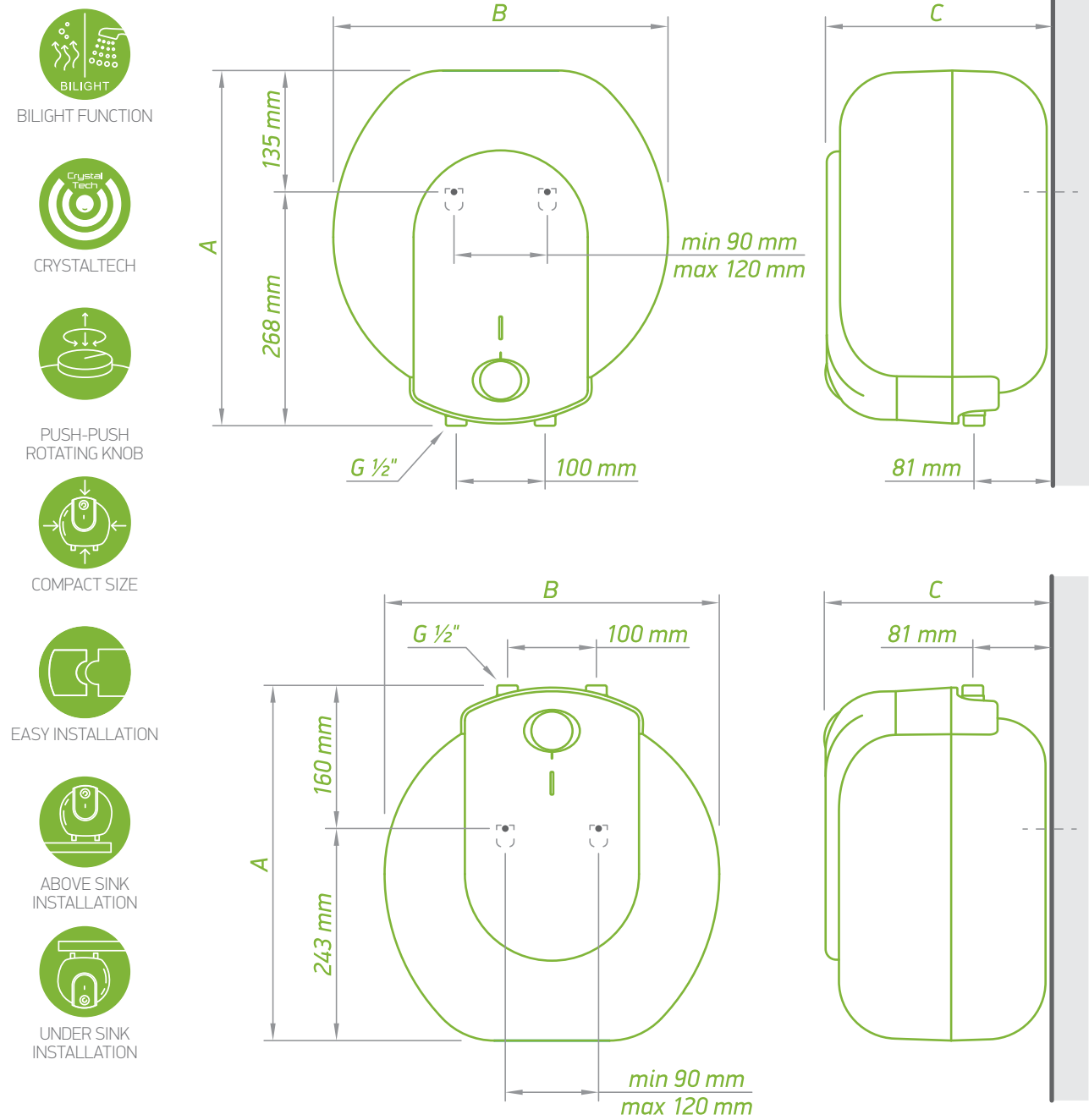
Compact 10/15

- ELEGANT COMPACT DESIGN
- SAVES SPACE
- CONVENIENT PUSH-PUSH THERMOREGULATOR for smooth water temperature setting
- BILIGHT INDICATION:
 - Red light for Heating mode
 - Blue light for Ready-to-use mode
- ABOVE AND UNDER THE SINK INSTALLATION
- Range 10 L - 15 L

MODEL		COMPACT 10 A	COMPACT 15 A	COMPACT 10 U	COMPACT 15 U
CODE		GCA 1015 L52 RC	GCA 1515 L52 RC	GCU 1015 L52 RC	GCU 1515 L52 RC
Real Volume	L	10	15	10	15
Rated power	W	1500	1500	1500	1500
Heating time –Δ t 45 K (15 - 60° C)		0 h 20 min	0 h 31 min	0 h 20 min	0 h 31 min
Annual consumption of electricity AEC	kWh	525	534	573	571
Energy class		A	B	B	B
Load profile		XXS	XXS	XXS	XXS
*T out of box	°C	60	60	60	60
**V 40	L	16	25	15	22
***T max	°C	70	70	70	70
****Max 40	L	18	27	16	27

*T out of box – the optimal working temperature for the certain electric water heater model, set by the producer
**V 40 – the quantity of hot water, which the electric water heater can produce, while working at T out of box
***T max – the maximal working temperature of the electric water heater
****Max 40 – the maximal quantity of hot water, which the electric water heater can produce, while working at maximum temperature

Compact 10/15



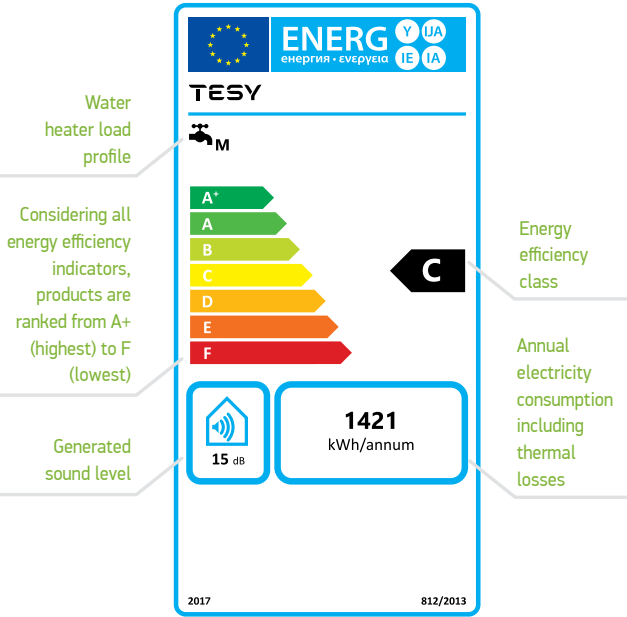
PRODUCT DIMENSIONS		COMPACT 10 A	COMPACT 15 A	COMPACT 10 U	COMPACT 15 U
CODE		GCU 1015 L52 RC	GCU 1515 L52 RC	GCU 1015 L52 RC	GCU 1515 L52 RC
height (A)	mm	399	399	399	399
width (B)	mm	377	377	377	377
depth (C)	mm	247	304	247	304

ENERGY LABELS

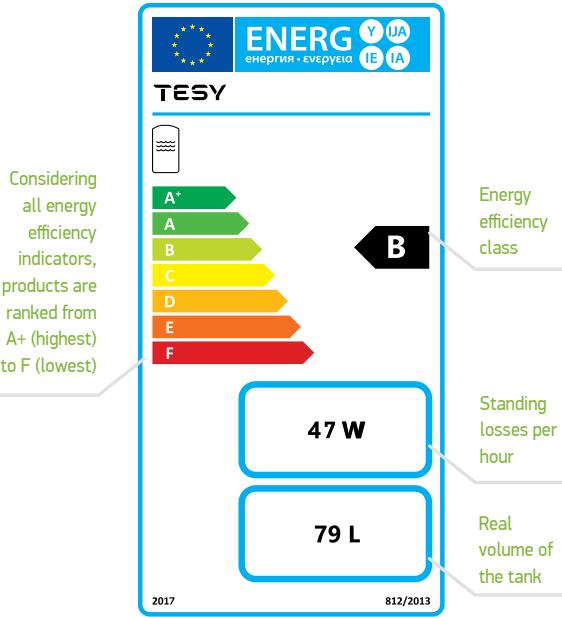
Since 26 September 2015, all TESI water heaters have been offered with energy efficiency labels in conformity with a new ErP (energy related Products) Directive of the European Union. The energy efficiency labels attached to the various domestic

appliances enable the consumer to take an informed decision when making a purchase. They include information about the type of the appliance, its energy efficiency class and electricity consumption on annual basis, etc.

Electric water heater without heat exchanger



Electric water heater with heat exchanger







Tesy Ltd.

Sofia Park, Building 16 V, 2nd Floor
1166 Sofia, Bulgaria

www.tesy.com



This catalogue is a marketing material and it is not an offer.
For specific models, please contact your dealer.

Copyright © All Rights Reserved, v. 1 2021 – TESY Ltd.